



Safety Switch

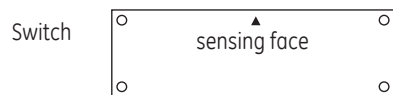
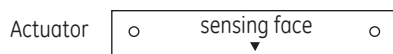
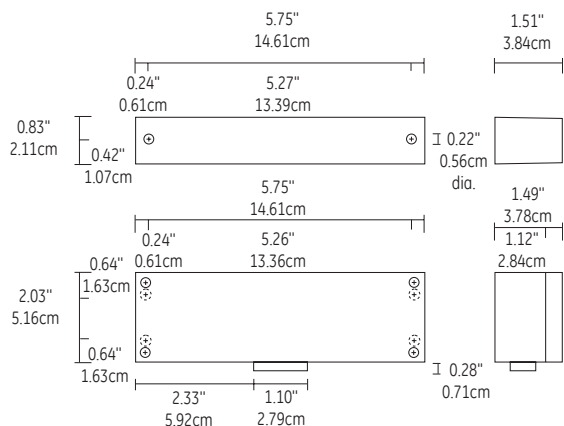
371-BT GuardSwitch Explosion Proof

Applications

- Requiring Explosion-Proof Enclosure for Hazardous Locations
- Meets ANSI, Semi S2 & European Safety Standard for the Highest Machine Risk Category 4 when used with the INT Safety Relay
- UL Enclosure Classified for Use in Hazardous Locations: Class I, Group B, C, D Class II, Group E, F, G Class III, Divisions 1 & 2

General Specifications

Enclosure	UL Explosion Proof Black Anodized, Die Cast Aluminum
Temperature Range	-40°F to 180°F (-40°C to 80°C)
Environmental	Hermetically Sealed Contact Switch Encapsulated in Polyurethane
NEMA Rating	1, 2, 5
Protection Class	IP 64
Response Time (individual circuits)	1 msec The two circuits do not switch simultaneously and depend on the speed of the guard closure.
Life Cycles	A delay less than 50 msec is typical. 100,000 Under Full Load; Up to 200,000,000 Under Dry Circuit
Conduit Connection	1/2" Threaded NPT
UL/CSA/TUV	All Models



conduit

Electrical Specifications

Circuit No.	Circuit Type	Contact Configuration	Load Rating	MAX Switching Voltage	MAX Switching Current
1	Switch	N.O.	40W/VA	48VAC/VDC	1.0ADC, 0.7AC
2	Tamper	N.C.	10W/VA	48VAC/VDC	0.3A



U9880128199005
When used with INT Safety Monitor Relay

Order Information

Part Number	Contact ¹ Configuration	Sense Range ² Minimum	Sense Range ² Maximum	Break Range	Terminal Type
371-BT	DPST: 1 N.O., 1 N.C.	0.3"(0.8cm)	0.6"(1.5cm)	1.2"(3.0cm)	#6 screws

Warning— Each electrical rating is an individual maximum and cannot be exceeded!

¹ Configuration with actuator away from the switch

² Proximity of ferrous materials usually reduces sense range — typically by 50%. The shape and type of material cause a wide diversity of effects. Testing is required to determine actual sense range for specific applications.